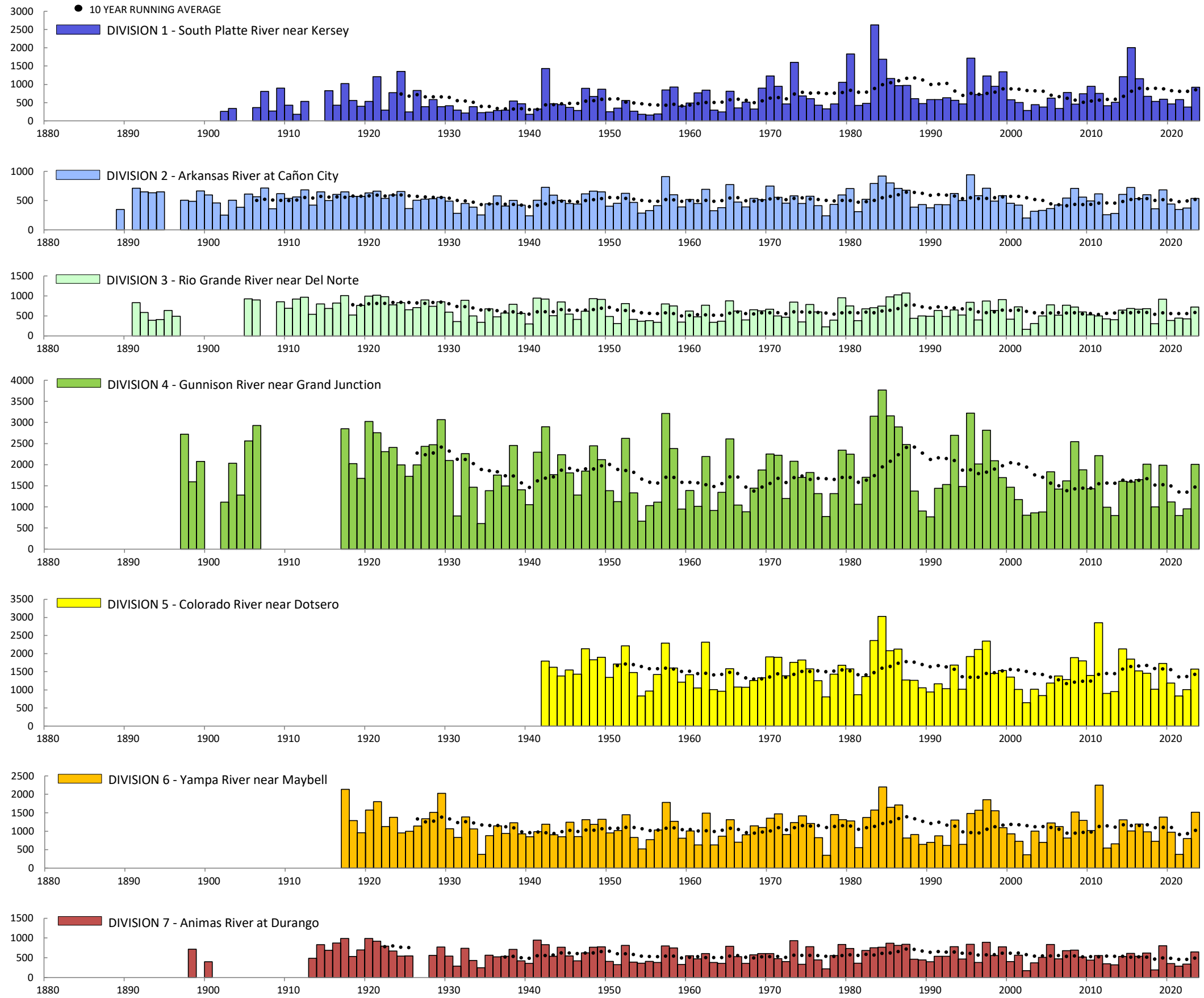
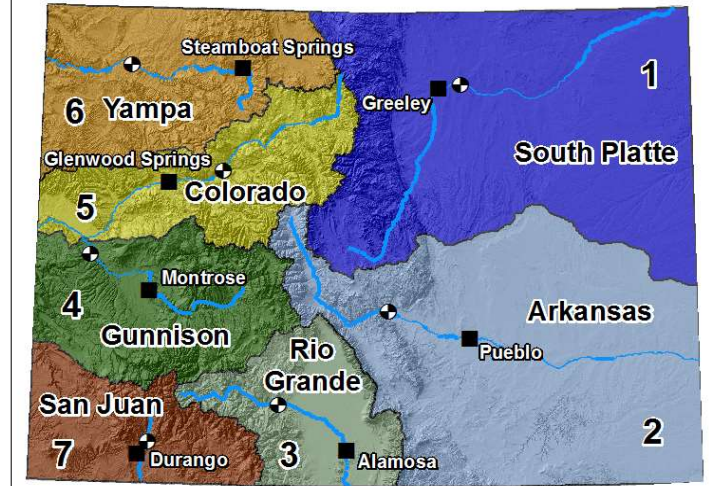


ANNUAL RUNOFF IN 1000 ACRE-FEET



Annual totals by water year (Oct 1 - Sep 30). Most recent water year data may be provisional. Years with incomplete gauge data have been omitted.



Map of Colorado Showing Water Divisions

- USGS Surface Runoff Gauge
- Division Water Court
- Water Division

The Natural Resource Conservation Service water supply outlook, as of May 1, 2024, contains the following estimates of runoff for the May through July 2024 period at the following gauges (Note: Not all gauges shown to the left are forecasted, in which case a representative gauge from the outlook report was chosen):

Div.	River	May - July Forecasted Runoff (1000 AF)	Percent of 30 year Average
1	So. Platte River at South Platte	130	90%
2	Arkansas River above Pueblo	315	100%
3	Rio Grande River at Thirty Mile Bridge	92	94%
4	Gunnison River near Grand Junction	870	78%
5	Colorado River near Dotsero	1,310	103%
6	Yampa River near Maybell	805	107%
7	Animas River at Durango	245	73%

COLORADO RIVERS HISTORICAL ANNUAL RUNOFF

May 2024



CONNECTING WATER TO LIFE

